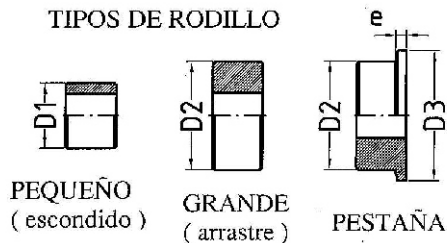
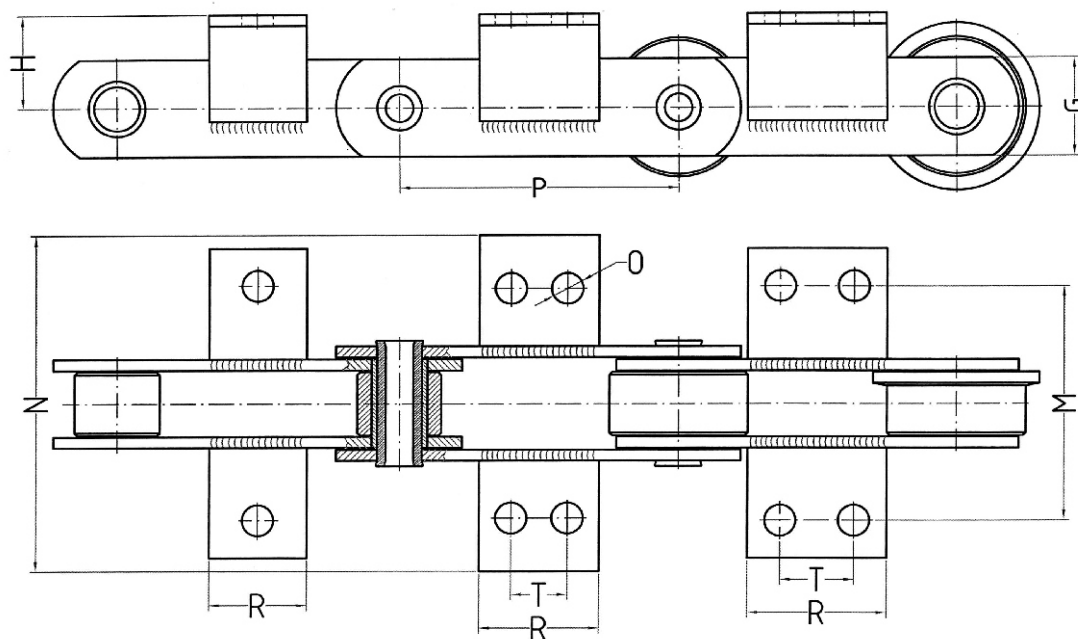


TIPOS DE RODILLO

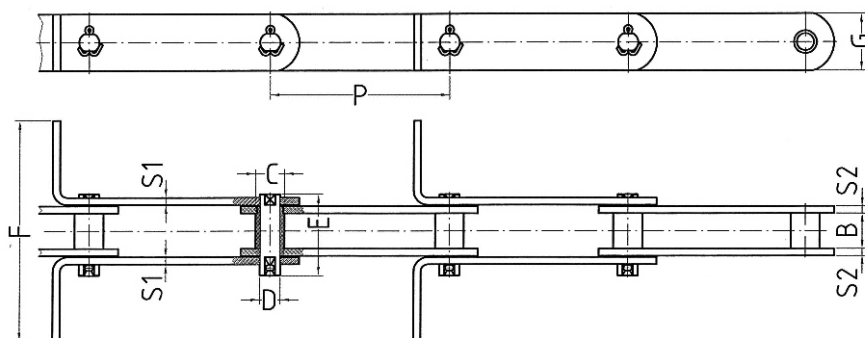


ISO mm.	p*** mm.					B mm.	C mm.	D1 mm.	D2 mm.	D3 mm.	e mm.	G mm.	S mm.	D mm.	J mm.	E mm.	mm. ²	ΔdaN
MC-28	63	80	100	125	160	20	17.5	25	36	42	4	25	3.5	13.0	8.3	42.0	367	2800
MC-56	80	100	125	160	200	24	21.0	30	50	60	5	35	4.0	15.5	10.3	46.5	500	5600
MC-112	100	125	160	200	250	32	29.0	42	70	88	7	50	6.0	22.0	14.3	64.0	985	11200
MC-224	160	200	250	315	400	43	41.0	60	100	120	10	70	8.0	30.0	20.3	85.0	1848	22400

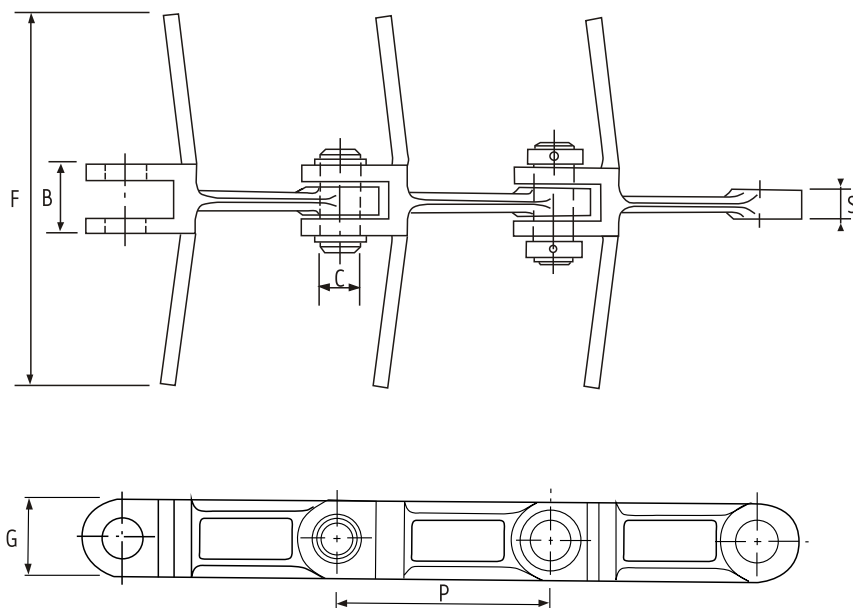


DIN 8169

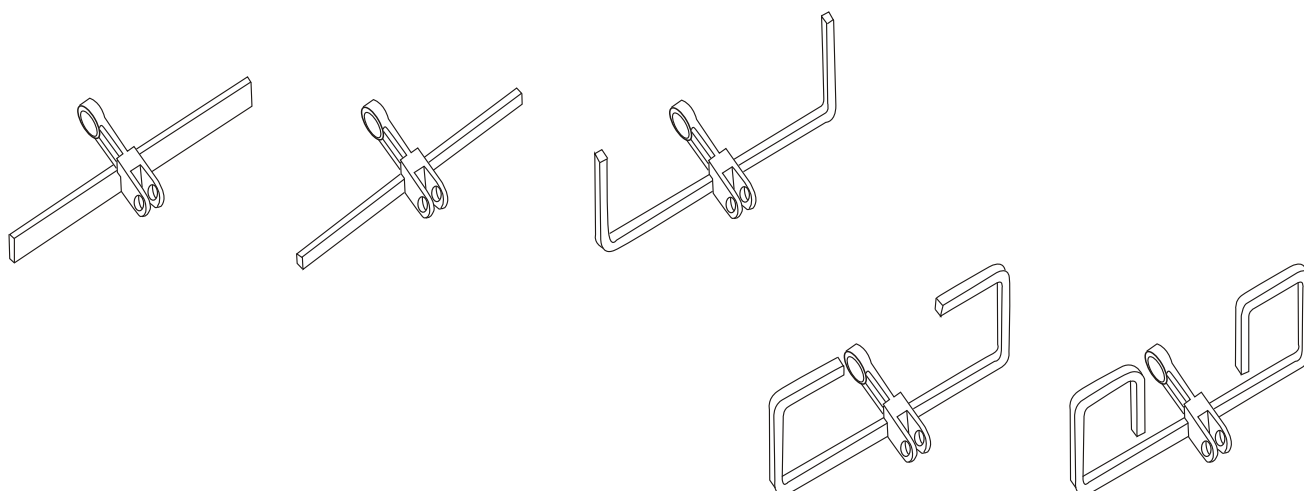
ISO	H	M	N	O	P	R	P	T	R	P	T	R	P	T	R
mm.	mm.	mm.	mm.	mm.	mm.	mm.	mm.	mm.	mm.	mm.	mm.	mm.	mm.	mm.	mm.
MC-28	25	70	108	9	63	25	80	20	45	100	40	65	125	65	90
MC-56	35	88	132	11	100	30	125	50	80	160	85	115	200	125	155
MC-112	45	110	180	14	125	40	160	50	90	200	85	125	250	145	185
MC-224	65	140	220	18	160	55	200	50	105	250	100	155	315	155	210

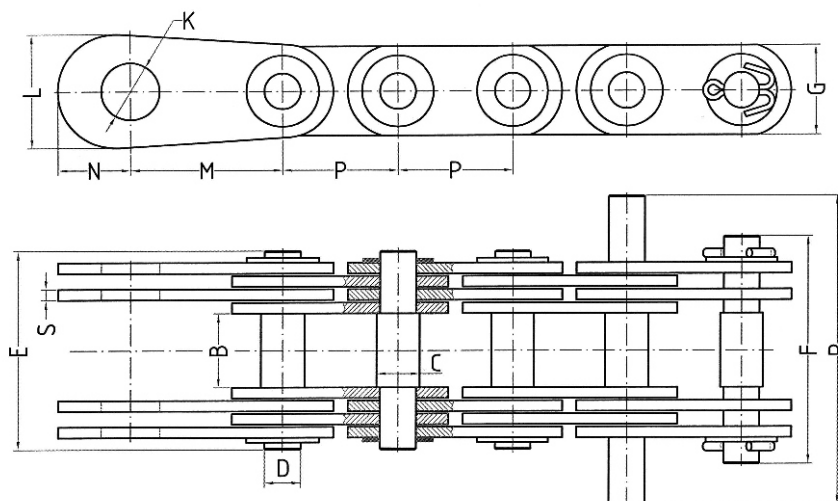


P	B	C	D	E	G Ancho	S1 Espesor	S2 Espesor	F	cm ²	Δ daN
	mm.	mm.	mm.	mm.	mm.	mm.	mm.	mm.		
80	18	15	10	36.00	25	3	3	250	2.55	3000
100	18	15	10	36.00	25	3	3	250	2.55	3000
125	18	15	10	36.00	25	3	3	250	2.55	3000
150	18	15	10	36.00	25	3	3	250	2.55	3000
160	18	15	10	36.00	25	3	3	250	2.55	3000
100	20	17	12	42.50	35	4	4	300	3.42	6000
125	20	17	12	42.50	35	4	4	300	3.42	6000
150	20	17	12	42.50	35	4	4	300	3.42	6000
160	20	17	12	42.50	35	4	4	300	3.42	6000
175	20	17	12	42.50	35	4	4	300	3.42	6000
200	20	17	12	42.50	35	4	4	300	3.42	6000
100	25	20	14	52.00	40	5	5	300	4.97	8500
125	25	20	14	52.00	40	5	5	300	4.97	8500
150	25	20	14	52.00	40	5	5	300	4.97	8500
160	25	20	14	52.00	40	5	5	300	4.97	8500
175	25	20	14	52.00	40	5	5	300	4.97	8500
200	25	20	14	52.00	40	5	5	300	4.97	8500
100	30	22	16	60.50	40	6	6	300	6.80	12000
125	30	22	16	60.50	40	6	6	300	6.80	12000
150	30	22	16	60.50	40	6	6	300	6.80	12000
160	30	22	16	60.50	40	6	6	300	6.80	12000
175	30	22	16	60.50	40	6	6	300	6.80	12000
200	30	22	16	60.50	40	6	6	300	6.80	12000
100	35	26	18	68.00	50	6	6	350	8.91	16000
125	35	26	18	68.00	50	6	6	350	8.91	16000
160	35	26	18	68.00	50	6	6	350	8.91	16000
200	35	26	18	68.00	50	6	6	350	8.91	16000
125	45	30	20	83.50	60	6	8	400	12.40	22000
150	45	30	20	83.50	60	6	8	400	12.40	22000
160	45	30	20	83.50	60	6	8	400	12.40	22000
175	45	30	20	83.50	60	6	8	400	12.40	22000
200	45	30	20	83.50	60	6	8	400	12.40	22000
250	45	30	20	83.50	60	6	8	400	12.40	22000
125	50	32	22	94.00	70	8	8	400	15.62	30000
150	50	32	22	94.00	70	8	8	400	15.62	30000
160	50	32	22	94.00	70	8	8	400	15.62	30000
175	50	32	22	94.00	70	8	8	400	15.62	30000
200	50	32	22	94.00	70	8	8	400	15.62	30000
250	50	32	22	94.00	70	8	8	400	15.62	30000



P mm.	G mm.	B mm.	S mm.	C mm.	F mm.	Δ daN
101.6	36	30	13	14	230	19000
142.0	50	42	19	25	430	35000
142.0	50	62	25	25	430	52000
150.0	47	42	19	25	430	30000
160.0	52	50	22	25	430	45000
200.0	60	66	28	30	500	55000
260.0	75	70	32	40	500	76000





P	B	C	D	E	F	R	Por paso	S Grueso	G Ancho	K	L	M	N	mm. ²	△ daN	kg/m
mm.	mm.	mm.	mm.	mm.	mm.	mm.		mm.	mm.	mm.	mm.	mm.	mm.			
10	8	4	3	17	19	-	2	1.5	8	6	16	15	10	9	880	0.40
15	12	5	4	24	26	-	2	2.0	12	9	18	20	11	16	1500	0.70
20	15	8	6	27	32	-	2	2.0	15	10	20	25	12	24	3000	1.10
25	18	10	8	35	41	67	2	3.0	18	12	25	30	15	48	5000	1.75
30	20	11	9	50	57	87	4	3.0	21	14	30	40	18	108	10000	3.40
35	22	12	10	52	60	92	4	3.0	26	16	35	45	21	120	13000	4.50
40	25	14	12	57	65	101	4	3.0	30	18	40	50	24	144	15000	4.70
45	30	17	14	62	69	107	4	3.0	35	22	45	55	27	168	17500	6.40
50	35	22	18	89	96	140	4	4.5	38	26	50	60	30	324	25000	10.60
55	40	24	21	107	114	162	4	6.0	40	32	55	65	33	504	31000	15.50
60	45	26	23	113	119	170	4	6.0	45	36	60	70	36	552	36000	18.00
70	50	32	28	147	156	212	4	6.0	55	40	70	85	42	1008	67000	33.50
80	60	36	32	158	170	232	6	6.0	60	50	85	100	51	1152	70000	38.20
90	70	40	36	183	199	265	6	7.0	70	60	100	120	60	1512	110000	53.00
100	80	45	40	223	238	308	8	7.0	80	70	120	140	72	2296	155000	76.60
110	90	50	45	235	250	326	8	7.0	90	80	140	160	84	2528	175000	90.00
120	100	55	50	260	276	356	8	8.0	100	90	160	180	96	3200	220000	112.00